

# 振动打麸机

Vibratory Bran Machine

XMZDF



**XIMAI** 扬麦

地址：江苏省无锡市新吴区城南路238-1号  
电话：0510-85388169 0510-85312358  
邮编：214000  
网址：www.wxym.cn  
邮箱：wxymj@163.com



扬麦官网

扬麦公众号

扬麦订阅号

**XIMAI** 扬麦

# XMZDF振动打麸机

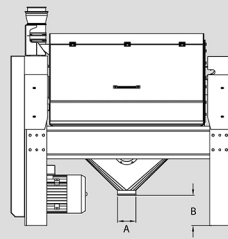
Vibratory Bran Machine

# XMZDF振动打麸机

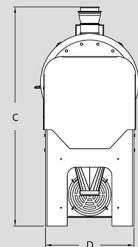
Vibratory Bran Machine



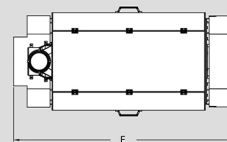
- 筛理能力强
- 筛网更换快
- 卫生条件好
- Strong Sieve Ability
- Screen Replacement Fast
- Good Sanitary Conditions



XMZDF振动打麸机正视图



XMZDF振动打麸机侧视图



XMZDF振动打麸机俯视图

## 应用及性能特点:

锡麦的XMZDF系列振动打麸机应用于粉状物料的筛分和来自普通打麸机或除尘器中难以处理的物料，也可作为普通打麸机使用。分碳钢和不锈钢两种版本，能满足生产过程中食品卫生的要求。

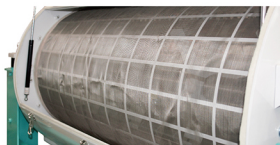
**筛理能力强**——特殊设计的振动装置，使整个筛体处于高频稳定震动能提高系统的筛理效率和增加产量；

**筛网更换快**——采用易拆装设计，可快速更换调整整张筛网，减少停机时间；

**卫生条件好**——不锈钢版本能更好地满足高标准的食品安全；

**低维护成本**——采用低维护设计，能减少维护时间，降低维护成本；

**简单易检修**——采用宽大可上翻的检修门设计，易于拆装，方便操作人员对设备进行维修和保养。



## Application and Performance Characteristics:

XIMAI's XMZDF series vibrating gluten machine for tin wheat is used in the screening of powdery materials and materials that are difficult to handle from ordinary gluten or dust collectors, as well as for ordinary gluten-making machines.

Carbon steel and stainless steel two versions, to meet the production process of food hygiene requirements.

**Strong sieve ability** - specially designed vibration device, so that the whole sieve body in high frequency stable vibration can improve the system's screening efficiency and increase production;

**Screen replacement fast** - the use of easy disassemble design, can quickly replace and adjust the entire screen, reduce downtime;

**Good sanitary conditions** - stainless steel version can better meet high standards of food safety;

**Low maintenance design** - the use of low maintenance design, can reduce maintenance time, reduce maintenance costs;

**Easy to overhaul** - the use of large can flip access door design, easy disassemble, convenient for operators to repair and maintain the equipment.

## 技术参数

型号	产量 (t/h)	功率 (kw)	吸风量 (m <sup>3</sup> /min)	重量 (kg)	体积 (m <sup>3</sup> )
XMZDF 5012	1	5.5	5	420	2.3
XMZDF 6212	1.5	11	8	650	2.8

## 规格尺寸

型号	尺寸 (mm)				
	A	B	C	D	E
XMZDF 5012	φ 120	230	1620	600	1835
XMZDF 6212	φ 150	250	1795	725	1835